




# FIBRELITE

PART OF OPW a  DOVER company

**Composite Manhole Covers and  
Underground Containment Systems**

## Contents

	Page
Introduction	1
Fibrelite's Commitment to Quality	2
Polished Skid Resistance value	2
Resin Transfer Molding (RTM) Manufacturing	2
Tank Chambers	3
Dispenser Sumps	3
Gas Break	4
Junction Box	5
Filler	5
Vent	6
Manhole Cover Frames	6
Manhole Covers Seals	6
Pipe Entry Seal Kits	7

## Fibrelite Introduction

Fibrelite is the world's leading manufacturer of high quality composite manhole covers and fiberglass secondary containment systems. The company introduced the lightweight composite manhole cover to the retail petroleum industry over 25 years ago and currently sells its products in over 70 countries.

Fibrelite manufactures more than 25 different varieties of manhole covers, multiports and access covers, with round covers ranging in size from 300mm to 1066mm in diameter and square covers of 457mm<sup>2</sup> and rectangular covers measuring over 1397mm long.

The company's innovative composite technology allows for multiport and single port cover designs – no other company currently offers a multiport composite cover that can handle 25-ton loading.

From high performance composite covers to watertight tank and dispenser sumps, Fibrelite manufactures high quality fiberglass products that can deliver in the toughest conditions. All fiberglass secondary containment products are vacuum testable to ensure that they are watertight.

Fibrelite stands for high quality, watertight, corrosion resistant manhole covers that last the lifetime of a site. With three manufacturing plants located around the world, it currently manufactures over 20 000 composite covers annually.



## Fibrelite's Commitment to Quality

Fibrelite's products are manufactured in the US, UK and Malaysia to the strictest manufacturing standards.

The company's products are regularly subjected to rigorous, independent testing to comply with stringent standards for safety, product performance, quality and reliability.

- ✓ ISO9001:2008 accredited
- ✓ BSI Kitemark approved products
- ✓ Kiwa approved products
- ✓ AASHTO H20/H25 compliant

## Polished Skid Resistance Value

Fibrelite's covers provide an excellent anti slip/skid surface which is guaranteed for the life cycle of the cover, with a Polished Skid Resistance Value of PSRV60> when wet, which exceeds the requirements of The Highways Agency (HA) 104/09, part 5, for potentially high risk sites.

## Resin Transfer Molding (RTM) Manufacturing

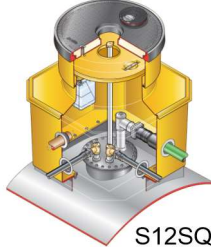
Fibrelite's products are manufactured in a closed mold environment combining long strand multi-directional fiberglass with a specifically formulated resin matrix to produce an extremely durable but lightweight product, approx. 1/3rd the weight of a steel or cast iron cover.



## Tank Chambers



S14-390



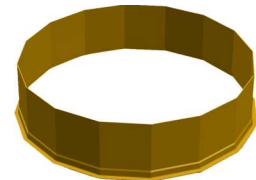
S12SQ-390-CD



S-CS-SEALKIT



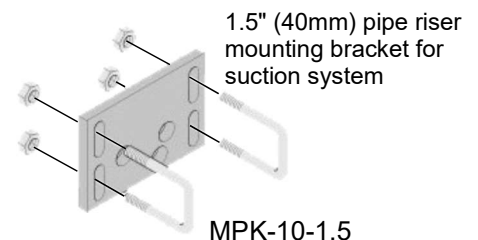
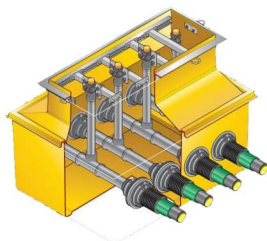
S-CS-BOTTLE



S14-EX300

ColVic Part No	FIBRELITE Part No	Description	Pack
11140	S12SQ-390-CD	1.2m dia. GRP chamber system with corbel, skirt, non-structural internal lid, 900mm flat sealed BLACK cover with CENTRAL dip port, composite frame and installation kit (consists of 4x polyurethane sealant, 4x foam spacers & 4x hanging rods) SQUARE BASE	1
10800	S14-390	1.4m dia. GRP chamber system with corbel, skirt, non-structural internal lid, 900mm flat sealed BLACK cover, composite frame and installation kit (consists of 4x polyurethane sealant, 4x foam spacers & 4x hanging rods)	1
10944	S14-390-CD	1.4m dia. GRP chamber system with corbel, skirt, non-structural internal lid, 900mm flat sealed BLACK cover with CENTRAL dip port, composite frame and installation kit (consists of 4x polyurethane sealant, 4x foam spacers & 4x hanging rods)	1
10802	S-CS-SEALKIT	Corbel to skirt seal kit. Includes 1/2 can of sealant, condensation bottle cage, drain and fixing kit	1
10835	S-CS-BOTTLE	Condensation bottle, cage, drain, fixing kit	1
10817	S14-EX300	300mm deep extension for S14 chamber. Supplied with 3 tubes of bonding sealant	1

## Dispenser Sumps



ColVic Part No	FIBRELITE Part No	Description	Pack
10829	EL-TAT-SM 1010	Dispenser sump, corbel and metal work to fit Tatsuno Salemaker 1010 model	1
10911	EL-TAT-SM 1060	Dispenser sump, corbel and metal work to fit Tatsuno Salemaker 1060 model 3 riser, 6 hoses	1

## Dispenser Sumps Continued

ColVic Part No	FIBRELITE Part No	Description	Pack
10872	EL-W-GS-6	Dispenser sump, corbel and metal work to fit Wayne global star model 1 riser, 2 hoses	1
10814	EL-W-GS-6	Dispenser sump, corbel and metal work to fit Wayne global star model 3 riser, 6 hoses	1
10825	EL-T-Q430S-8-4	Dispenser sump, corbel and metal work to fit Tatsuno Q430 series model. 4 suction lines	1
10813	EL-W-VIS-390-399	Dispenser sump, corbel and metal work to fit Wayne Vista 390-399. 3 suction lines	1
10837	EL-T-Q430S-6-3	Dispenser sump, corbel and metal work to fit Tatsuno Q430 series model. 3 suction lines	1
10826	EL-T-Q230T-2	Dispenser sump, corbel and metal work to fit Tatsuno Q230 series model. 2 suction lines	1
10876	EL-T-Q510T-3-6	Dispenser sump, corbel and metal work to fit Tatsuno Q510 series model. 3 suction lines	1
10815	EL-W-GC-G2200	Dispenser sump, corbel and metal work to fit Wayne Global Century G220 2 PRODUCT fits 2 product risers	1
10871	EL-G-END-S1	Pump sump, corbel and metal work to fit Gilbarco Endeavor pump. 1 suction line. Includes 1 pipework support rail	1
10836	EL-G-ADV-48 -B05202-3-6	Dispenser sump, corbel and metal work to fit Gilbarco Advantage B5202 3 product model fits 3 product risers	1
10901	EL-W-H5000-S3-6	Dispenser sump, corbel and metal work to fit HELIX 6000 3 product model fits 3 product risers	1
10903	EL-W-H5000-S2-4	Dispenser sump, corbel and metal work to fit HELIX 6000 3 product model fits 2 product risers	1
10900	EL-W-H6000-S3-6	Dispenser sump, corbel and metal work to fit HELIX 6000 3 product model fits 3 product risers	1
10888	EL-W-H2000-2-4	Dispenser sump, corbel and metal work to fit HELIX 2000 2 product model fits 2 product risers	1
10816	MPK-10-1.5	1.5" (40mm) pipe riser mounting bracket for suction system	1

## GAS Break (Draw Pit)



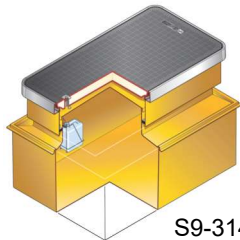
S1-1450



S2-160

ColVic Part No	FIBRELITE Part No	Description	Pack
10803	S1-1450	450mm square x 600mm deep solid base sump with a 450mm square flat sealed black cover and frame	1
10804	S2-160	600mm square x 600mm deep solid base sump with a 600mm square flat sealed black cover and frame	1

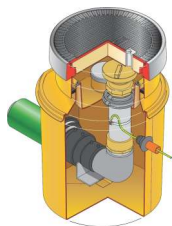
## Junction Box



S9-3140

ColVic Part No	FIBRELITE Part No	Description	Pack
10809	S9-3140	1470 rectangular x 990MM deep solid base chamber, corbel, adjustable skirt, internal lid and flat sealed cover frame	1

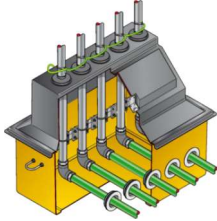
## Filler



S57-3180-OF-K1-DW

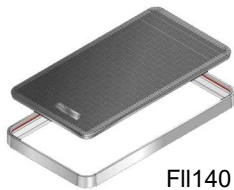
ColVic Part No	FIBRELITE Part No	Description	Pack
10808	S57-3180-OF-K1-DW	570mm dia solid base sump, spill container, skirt, 450mm dia flat sealed black cover and frame. Includes PEC2/33 earth kit. 1 KPS double walled fill 125/110, KPS pipe entry kit	1
10834	S57-3180-VR1-NP	570mm dia solid base sump, skirt, 450mm dia flat sealed black cover and frame. PEC2/33 earth sealkit. Pipework support foot (No side wall entry boot supplied)	1

## Vent



CoVic Part No	FIBRELITE Part No	Description	Pack
10820	S11-2-VENT	1100mm X 800mm X 525mm solid base sump, 450mm high top with hinged door. Includes pipework support rail. Fits up to 5 vent lines	1
10821	MPK-VENT	Vent riser support bracket	1
10820	PSB-63-VT	Vent riser 63mm pipe sealkit	1
10823	VT-CAP-63	Vent riser 63mm pipe sealkit uv protection cap	1

## Manhole Covers and Frames



FII140



FII90



FL90-CD



FL7A

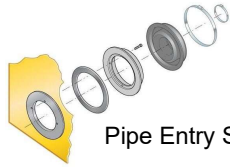
CoVic Part No	FIBRELITE Part No	Description	Pack
19483	FL 140	1400mm X 700mm flat sealed BLACK cover with composite frame <b>C250 LOAD RATED - 25 TONNE</b>	1
10879	FL I90	900mm dia. flat sealed BLACK cover with composite frame <b>C250 LOAD RATED - 25 TONNE</b>	1
10972	FL 90-CD	900mm dia. flat sealed BLACK cover with a CENTRAL dip port and composite frame <b>(C250 LOAD RATED - 25 TONNE)</b>	1
10812	FL 7A	Lifting handle with foot lever to remove and replace all Fibrelite covers	1

## Manhole Covers Seals

CoVic Part No	FIBRELITE Part No	Description	Pack
10660	FL90-SEAL	FL90 REPLACEMENT SEAL	1
10695	FL180-SEAL	FL180 REPLACEMENT SEAL	1



# Pipe Entry Seal Kits



Pipe Entry Seal Kits

ColVic Part No	FIBRELITE Part No	Description	Pack
10833	PSB-90	Pipe entry seal kit suitable for pipe O/D 81mm to 95mm	1
10805	PSBD-50	Double sided pipe entry seal kit suitable for pipe O/D 45mm - 53mm	1
10811	PSBD-63	Double sided pipe entry seal kit suitable for pipe O/D 57mm - 66mm	1
10807	PSBD-75	Double sided pipe entry seal kit suitable for pipe O/D 68mm to 79mm	1
10819	PSBD-110	Double sided pipe entry seal kit suitable for pipe O/D 112mm to 131mm	1
10806	PSBD-125	Double sided pipe entry seal kit suitable for pipe O/D 112mm to 131mm	1



## ColVic Marketing and Engineering (Pty) Ltd

251 Albert Amon Road  
Meadowdale  
Germiston  
PO Box 13759, Northmead, 1511  
South Africa

Tel: +2711 4578500  
Fax +2711 4578518  
E-mail: [sales@colvic.co.za](mailto:sales@colvic.co.za)  
Website: [www.colvic.co.za](http://www.colvic.co.za)

